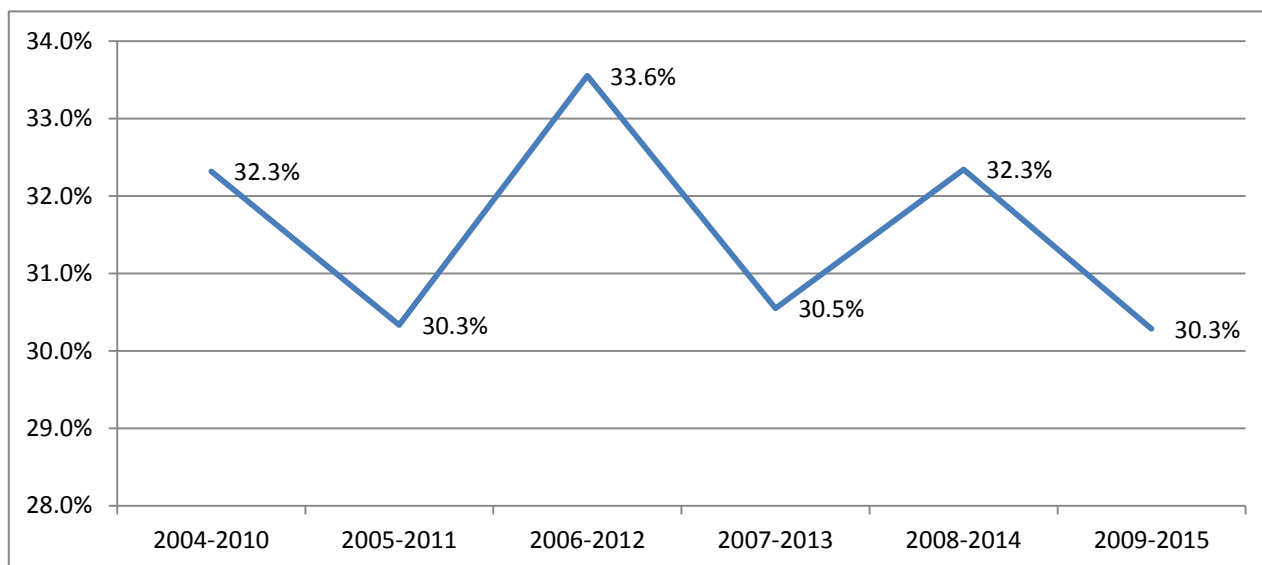


CSU Facts & Figures 2015: Graduation Rates



CSU Bachelor's Degree Six-Year Graduation Rate Trends: 2004-2010 through 2009-2015

Note: Graduation rates are for first-time full-time undergraduate student cohorts enrolled fall semester who entered CSU in a baccalaureate degree program in the fall or the preceding summer term.

Disaggregated Category	2004-2010	2005-2011	2006-2012	2007-2013	2008-2014	2009-2015
Total Cohort	32.3%	30.3%	33.6%	30.5%	32.3%	30.3%
Female						
African-American	37.4%	28.7%	25.9%	28.0%	29.4%	26.6%
White	38.4%	38.0%	43.4%	40.3%	36.3%	38.7%
Other	42.4%	29.9%	47.6%	30.3%	42.2%	37.5%
<i>Sub-Total</i>	38.4%	34.1%	37.3%	35.2%	31.3%	33.7%
Male						
African-American	16.0%	16.3%	17.6%	19.4%	23.4%	20.8%
White	25.6%	27.6%	31.5%	26.3%	31.9%	28.1%
Other	23.5%	22.0%	30.6%	23.8%	31.0%	18.4%
<i>Sub-Total</i>	23.0%	24.3%	27.8%	24.3%	29.5%	25.1%
Combined						
African-American	30.5%	24.8%	23.4%	24.8%	27.3%	24.7%
White	33.0%	33.7%	38.2%	33.9%	34.3%	34.1%
Other	33.6%	26.5%	40.2%	27.8%	36.3%	28.2%
<i>Total</i>	32.3%	30.3%	33.6%	30.5%	32.3%	30.3%

Non-Learning Support	34.9%	34.2%	39.5%	35.2%	37.7%	36.5%
Learning Support	19.0%	9.0%	11.4%	12.7%	12.0%	9.3%
<i>Total</i>	32.3%	30.3%	33.6%	30.5%	32.3%	30.3%
Traditional	33.5%	31.6%	34.5%	31.3%	33.6%	31.0%
Non-Traditional	6.8%	4.2%	11.6%	10.8%	7.3%	14.5%
<i>Total</i>	32.3%	30.3%	33.6%	30.5%	32.3%	30.3%